



Parkwest Air Tours
1550 Larimer Street #158
Denver, CO 80202
(970) 201-4557
www.parkwestair.com
mlfay@parkwestair.com

April Tour Update

Hello, All!

We are excited about the October *Swan Song* tour, and look forward to seeing all of you in the Mile High City on October 1st, if not before.

PARTICIPANT LIST

Here is the official participant roster—grab a cup of coffee, it's a long one!

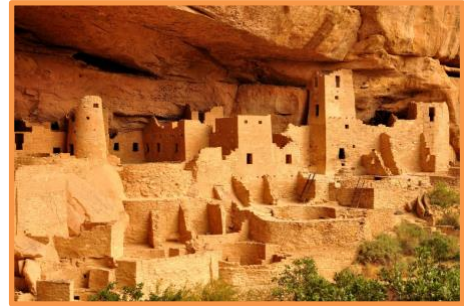
Bill Bernard and Mary Harney, Springfield, IL	Honda Civic YQS 878
Bill and Nancy Blake, Sarasota, FL	Cessna Skylane N423TA
Mike and Ginny Borner, Easton, MD Carl and Barbara Rigg, Grosse Ile, MI	Beechcraft King Air N96MB
Dana Clow and Anita Mohan, Plainville, MA	Rockwell Commander N4755W
Glenn Dahl and Linda Illig, Portland, OR Mark and Kathie Cassidy, Waterford, CT	Cirrus Jet N995VJ
Stan and Sharon Dardis, Woodbury, MN	Cirrus SR22 N755CP
Chester and Suzanne Harris, Dayton, OH	Mooney M20 N55LL
Paul and Marilyn Hollowell, Venice, FL	Cessna Skylane N5241S
Bob and Leslie Howell, Washoe Valley, NV	Murphy Moose N7393H
Rick and Pam Kelty, Vail, AZ	Tecnam Bravo N822RK
Richard Leofsky and Kay Dunn, Willis, TX	Cessna Silver Eagle N913SE
Ernie and Kris Salmon, Thousand Oaks, CA	Cessna Skylane N7477Q
Peter Sodermans & Franky Coene, Luxembourg/Argentina	TBD
Garney and Tricia Scott, Nashville, TN	Piper Malibu N948S
Collin and Marisa Fay, Denver, CO	Centurion N761GY

FREE DAY ACTIVITIES

In an effort to keep the price of this tour as low as possible, we have eliminated some of the meals and activities normally included with our tours. In the end, we think everyone will enjoy the flexibility on their free days to choose what they wish, when they wish, and pay for it individually. (Or do nothing, and pay nothing!) You will have full days at Mesa Verde National Park, Capitol Reef National Park, and Death Valley National Park. In order to help get you thinking about possibilities, I've summarized some of the available options below for each spot.

Mesa Verde National Park, October 4

- [NPS programs, visitor center](#)
- [Guided interpretive bus tours](#)

Capitol Reef National Park, October 6

- [Jeep Safaris](#)
- [Llama Treks](#)
- [Horseback Riding](#)

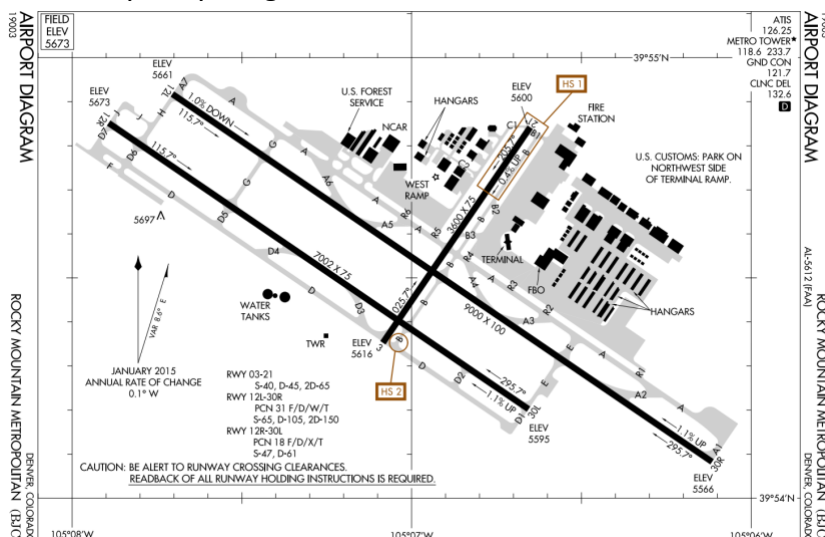
Note: All activities are coordinated through the resort. They've asked that you all coordinate your desired activities with me, so that I can include that with the rooming list.

Death Valley National Park, October 8

- [NPS programs, visitor center](#)
- [Jeep Rentals with Farabees](#)
- [Golf at world's lowest golf course below sea level](#)
- [Spa Services](#)
- See more of the National Park by plane—yours! We can outline a scenic tour for you.

**FLYING INFO**

We have decided to use Denver's Rocky Mountain Metropolitan Airport (KBJC) as the starting point for the tour. BJC is located northwest of Denver, about halfway between Denver and Boulder, 20 minutes (drive) from downtown Denver. It is a towered airport, but just outside of Denver's Class B airspace, so relatively easy to get in to and out of. There are two FBOs, Sheltair and Signature. Unfortunately, the Sheltair facility is brand new; so new, in fact, that their building is still under construction. To avoid the mess, we think it will be best to use the Signature facilities. If the construction work at the Sheltair facility proceeds fast enough so that we can use them, we'll let you know.



As you probably noticed, this is a large group of 14 aircraft, so large that we will be overwhelming some of the airports that we plan to use. Because of that, and in order to ease “congestion” in the air, we think it prudent to divide ourselves in to two groups, probably by speed, similar to the way we did on the original Alaska trip. We’ll let you know your group “assignment” once we get closer to the start date. The faster aircraft (Group A) will fly a slightly different route, and, in one instance, use a different airport than the other group. The airports we plan to use are shown below.

Airport	Location	Identifier	Elevation	Runway Length	Comments
Rocky Mountain Metro	Denver, CO	KBJC	5,673	9,000	Class D
Cortez Municipal	Cortez, CO	KCEZ	5,917	7,205	
Wayne Wonderland	Loa, UT	38U	7,029	5,900	No Jet A / Group B
Richfield Municipal	Richfield, UT	KRIF	5,318	7,100	Group A
Sedona	Sedona, AZ	KSEZ	4,830	5,132	
Furnace Creek	Death Valley NP, CA	L06	(210)	3,065	No Fuel

Also note that the last leg from Sedona to Death Valley is nearly 300 nm, with no fuel available at Death Valley. We know some of you will want to stop en route to top-off with fuel. We’ll leave the decision to you, but there are several good refueling options near our proposed route in the Las Vegas (NV) or Bullhead City (AZ) areas that we will discuss at the Denver flight briefing. Again, we should probably plan to spread ourselves out so we don’t overwhelm any one airport’s fueling facilities.

PAYMENT TERMS

Just a reminder that your final payment of \$1995/per person (if you’ve not already paid in full) is due no later than July 1st. I’m sure we’ll have another update out in June, so we’ll include a reminder then.

Looking forward to seeing you all in October!

Sincerely,



- Marisa